



TW-500



The TW-500 Series from Southern State Lighting is an Ultra-high efficiency tunable white lighting solution designed for architectural, commercial, and high-end residential applications. This is a 10mm wide body, which is compatible with all of our extrusion options. High color rendering in both fidelity and gamut make this an excellent solution for applications with rich finishes and fine details that need to be brought front and center.

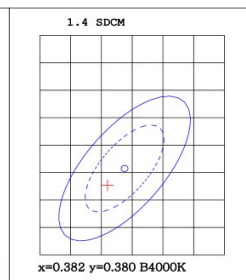
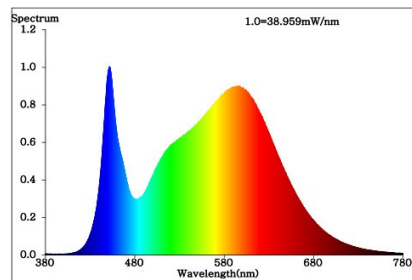
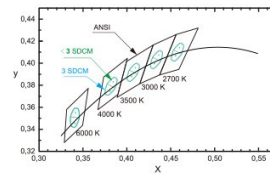
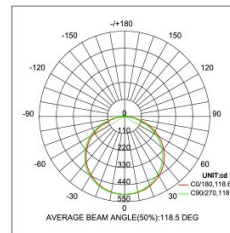
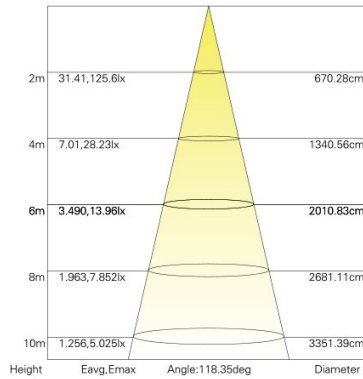
Catalog Nomenclature:

Series	Output	Color Temp	IP Rating
TW	500	(CCT)	IP20

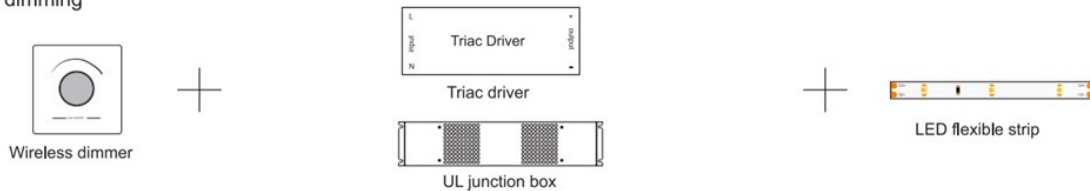
Body Width:	10mm	Input Voltage:	24VDC
Wattage/Ft:	2.2W	Beam Angle:	120 Degrees
Lumens/Ft:	226-472lm/ft	Max Run Length:	43ft
CCT's:	2700K-6000K	Bin Sorting:	Single Bin
CRI:	90+	Bin Consistency:	3-Step MacAdam Ellipse
Cut Interval:	3.94" (100mm)	Driver Type:	Constant Voltage
IP Rating:	IP20	Dimming Capability:	0% With Compatible Driver
Rated Life:	L70>50,000 Hours	Certifications:	UL, CE, ROHS



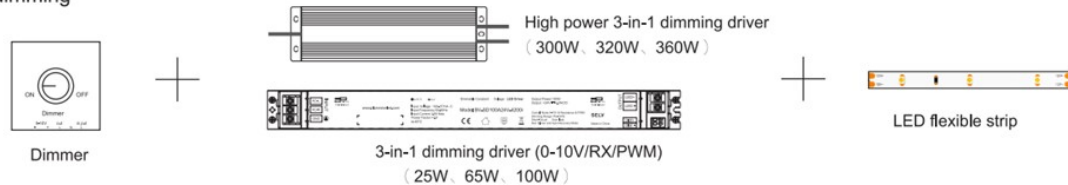
Test report



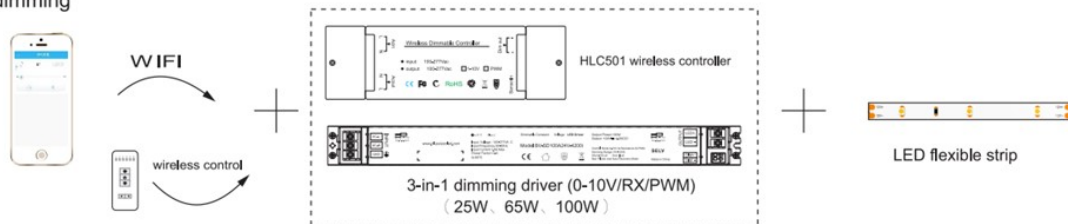
Triac dimming



0-10V dimming



Smart dimming





TW-500

Applications





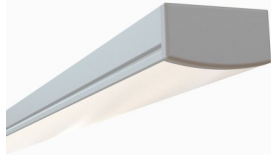
TW-500

Compatible Extrusions

ESR-SOSL



ESR-REC



ESR-OTR



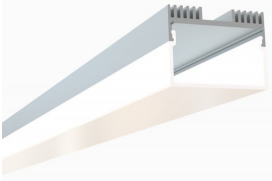
FSR-TRI



ESR-SOI



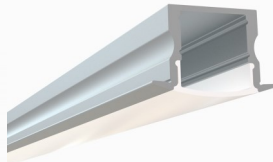
ESR-RC1



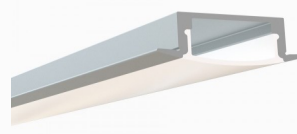
FSR-RND



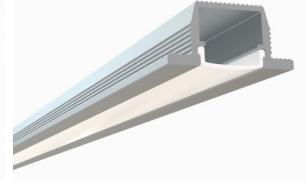
ERC-SOSL



ERC-REC



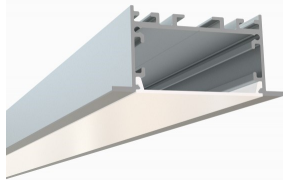
ERC-WLK



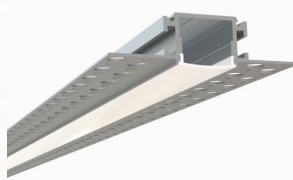
ERC-RE1



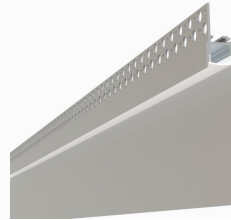
ERC-RE2



ETL-SQ



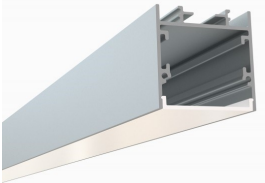
ETL-KCK



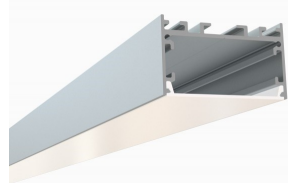
ESU-SQSL



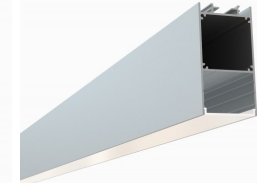
ESU-SOI



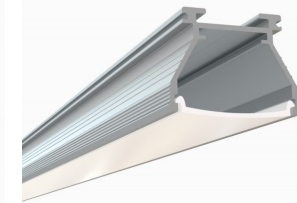
ESU-RCW



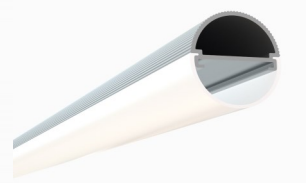
ESU-RCN



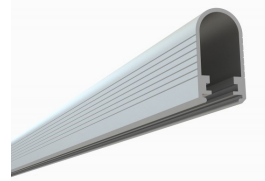
ESU-VTL



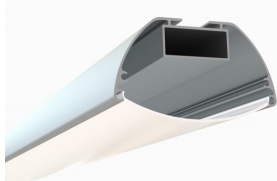
ERO-SLI



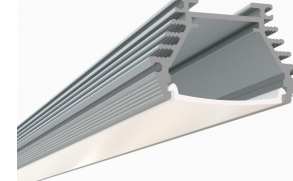
FRD-CIS



FAD-OVI



FAD-VT2



FAD-VT3



FAD-RND

