



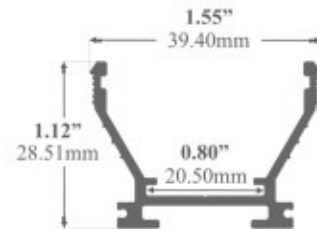
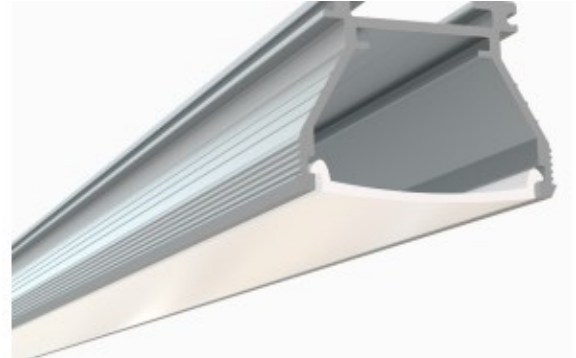
ESU-VTL Series

The ESU-VTL is a medium-sized LED Channel compatible with LED Strips up-to 20mm (0.79") wide.

This profile offers a uniform lighting with Opal Diffuser eliminating the hotspots.

Thanks to its mounting channel on its back side, it features a wide range of installation options. ESU-VTL Series can be used with three different mounting options;

- Pendant LED Channel with Suspension Kit
- Surface Mount LED Channel with Flat Surface Mounting Brackets
- Angle Adjustable LED Channels with Adjustable Mounting Brackets



Type: LED Channel

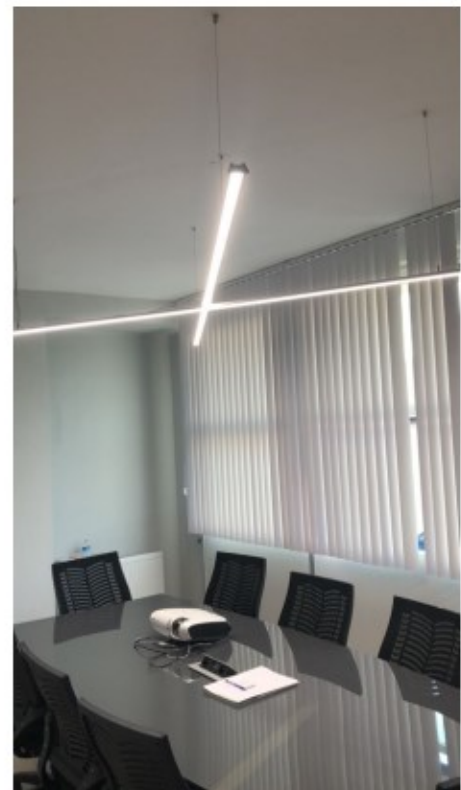
Material: Aluminum 6063-T5

Surface: Clear Anodized

Height: 28.51mm / 1.12"

Width: 39.40mm / 1.55"

Length: Nominal 8FT (94") / 2.40M





Accessories

Diffuser Lens Cover



LNC-ESU-VTL



LNF-ESU-VTL

End Caps

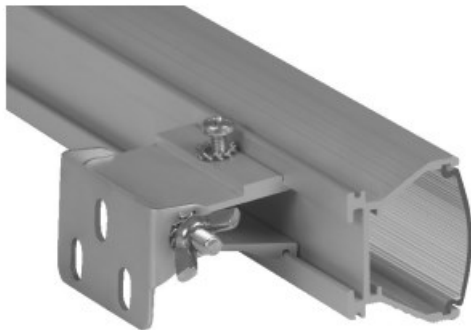


EC-ESU-VTL

Mounting



SK-KIT



AMB-ESU-VTL