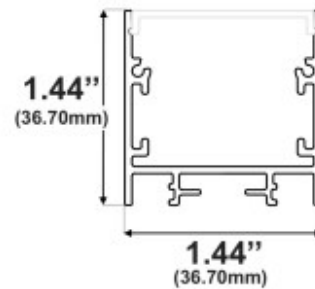
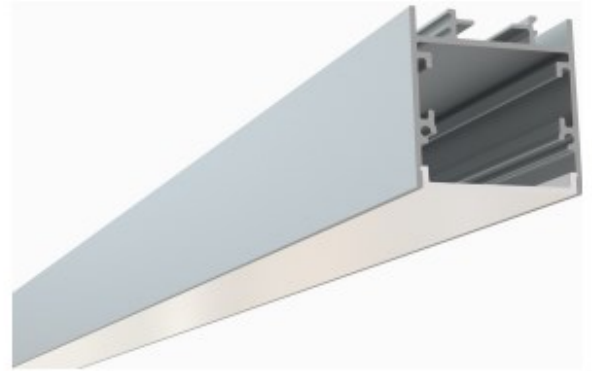




ESU-SQ1 Series

The ESU-SQ1 is a LED Channel compatible with LED Strips up-to 1.07" (27mm) wide.

It can be used as a Surface Mount Fixture or can be used with Suspension Kit to build a Pendant Fixture.



Type: LED Channel

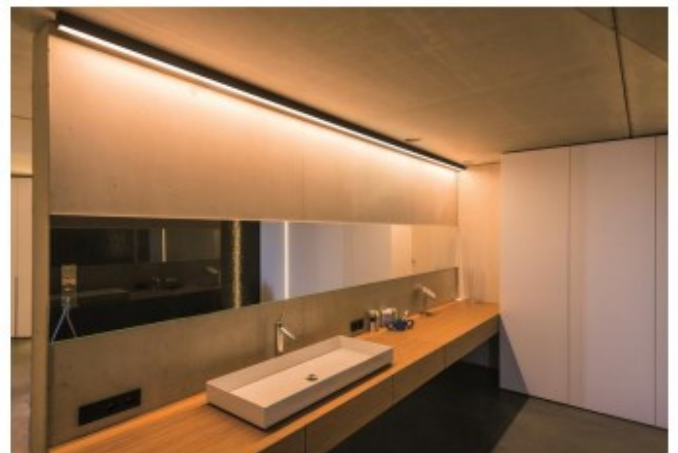
Material: Aluminum 6063-T5

Surface: Clear Anodized

Height: 36.70mm / 1.44"

Width: 36.70mm / 1.44"

Length: Nominal 8FT (94") / 2.40M





ESU-SQ1 Series

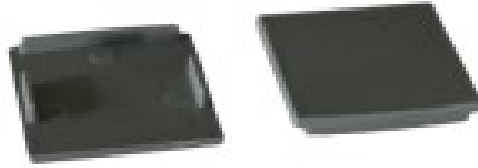
Accessories

Diffuser Cover Lens



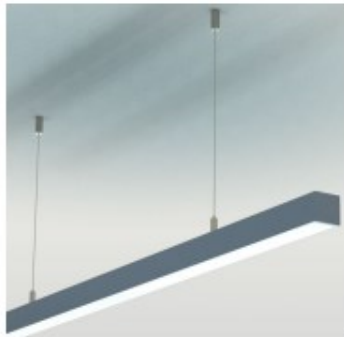
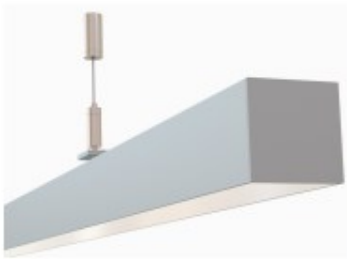
LNF-ESU-SQ1

End Caps



EC-ESU-SQ1

Mounting



SK-KIT

