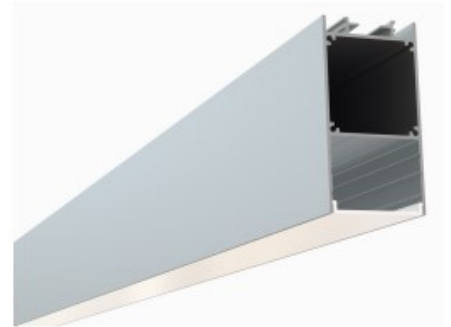




ESU-RCN Series

The ESU-RCN Series is a Suspended Slim LED Aluminum Channel for architectural applications with a surface area that supports LED lighting sources up-to 30mm (1.18") wide.

It offers an internal housing space for slim LED Drivers and can be used in Suspended and Surface Mount applications



Type: LED Channel

Material: Aluminum 6063-T5

Surface: Clear Anodized

Height: 70.00mm / 2.76"

Width: 36.70mm / 1.45"

Length: Nominal 8FT (94") / 2.40M





ESU-RCN Series

Accessories

Diffuser Lens Cover



LNF-ESU-RCN



End Caps



EC-ESU-RCN

Mounting



SK-KIT

