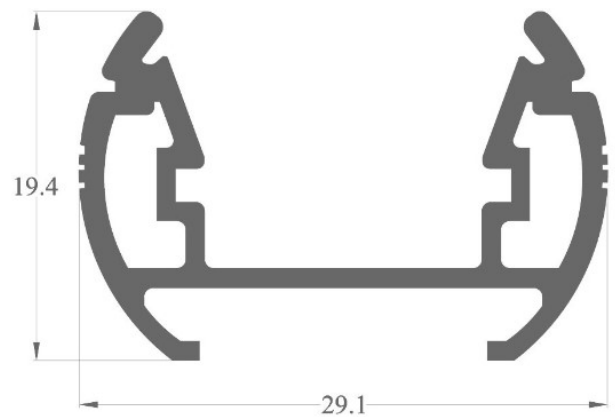
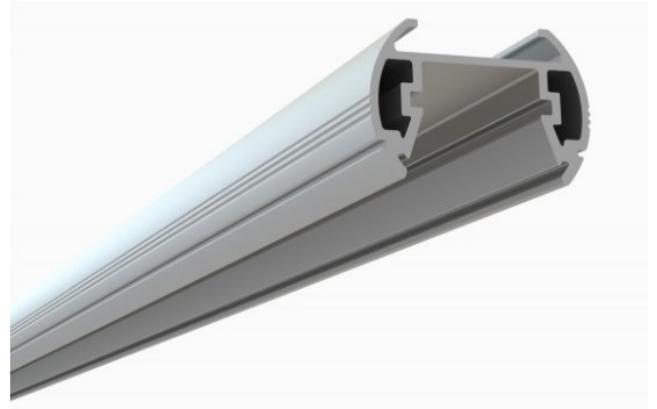




## ERO-RND Series

The ERO-RND is a round-shape LED Channel compatible with LED Strips up-to 15mm (0.59") wide.

It is suitable for surface or pendant mounting, and is available with adjustable mounting brackets.



**Type:** LED Channel

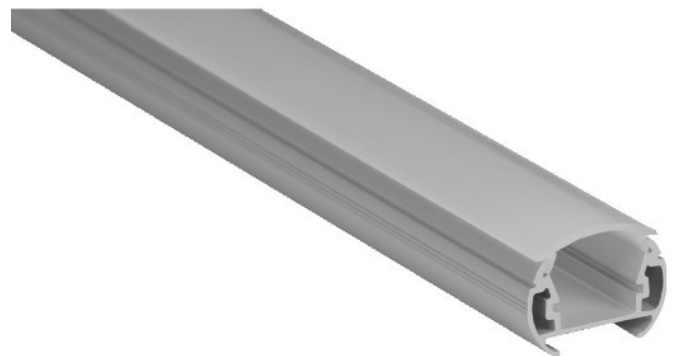
**Material:** Aluminum 6063-T5

**Surface:** Clear Anodized

**Height:** 19.40mm / 0.76"

**Width:** 29.10mm / 1.15"

**Length:** Nominal 8FT (94") / 2.40M





**SOUTHERN STATE**  
LIGHTING

## EAD-RND Series

### Accessories

#### Diffuser Lens Covers



LNC-EAD-RND

#### Mounting



AMB-KIT