



COB-300



2700K	3000K	4000K	6500K
5W/m (1.5W/ft) 482LM/m (147LM/ft)	5W/m (1.5W/ft) 520LM/m (158LM/ft)	5W/m (1.5W/ft) 575LM/m (175LM/ft)	5W/m (1.5W/ft) 560LM/m (171LM/ft)
10W/m (3W/ft) 960LM/m (293LM/ft)	10W/m (3W/ft) 1030LM/m (314LM/ft)	10W/m (3W/ft) 1140LM/m (347LM/ft)	10W/m (3W/ft) 1125LM/m (343LM/ft)
15W/m (4.6W/ft) 1418LM/m (432LM/ft)	15W/m (4.6W/ft) 1530LM/m (466LM/ft)	15W/m (4.6W/ft) 1700LM/m (518LM/ft)	15W/m (4.6W/ft) 1675LM/m (511LM/ft)

The COB-300 Series from Southern State Lighting is an Ultra-high efficiency Chip-On-Board flexible lighting solution designed for architectural, commercial, and high-end residential applications. This is a 10mm wide body, which is compatible with all of our extrusion options. High color rendering and lack of diode-imaging make this an excellent all-around solution.

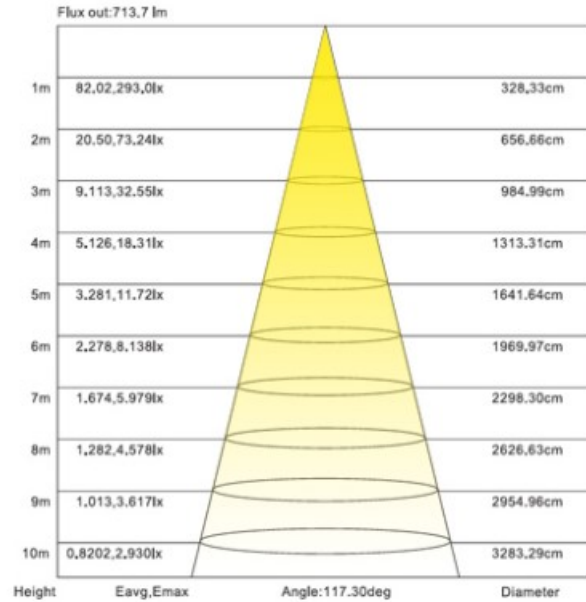
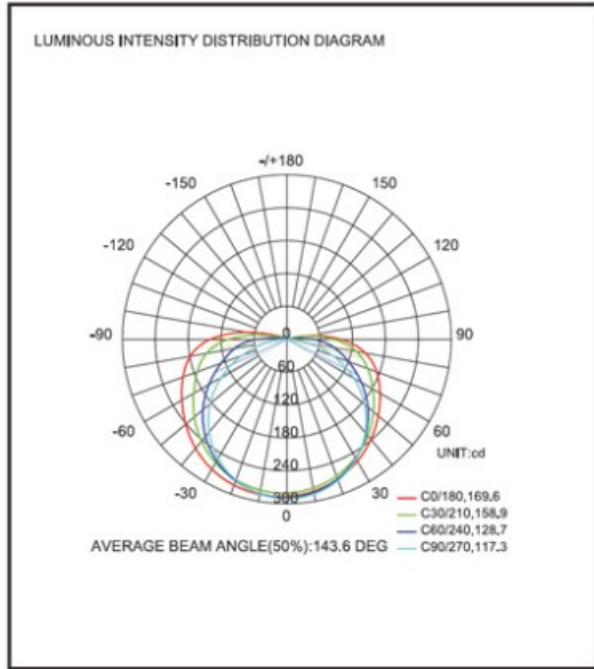
Catalog Nomenclature:

Series	Output	Color Temp	IP Rating
COB	300	(CCT)	IP20

Body Width:	10mm	Input Voltage:	24VDC
Wattage/Ft:	3W	Beam Angle:	120 Degrees
Lumens/Ft:	293-347lm/ft	Max Run Length:	32.8ft
CCT's:	2700K, 3000K, 4000K, 6500K	Bin Sorting:	Single Bin
CRI:	90+	Bin Consistency:	3-Step MacAdam Ellipse
Cut Interval:	1.88" (50mm)	Driver Type:	Constant Voltage
IP Rating:	IP20	Dimming Capability:	0% With Compatible Driver
Rated Life:	L70>50,000 Hours	Certifications:	UL, CE, ROHS

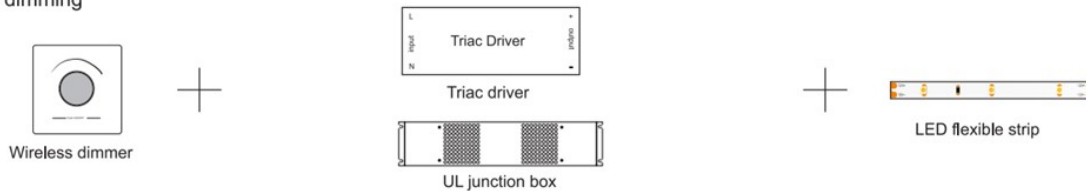


COB-300

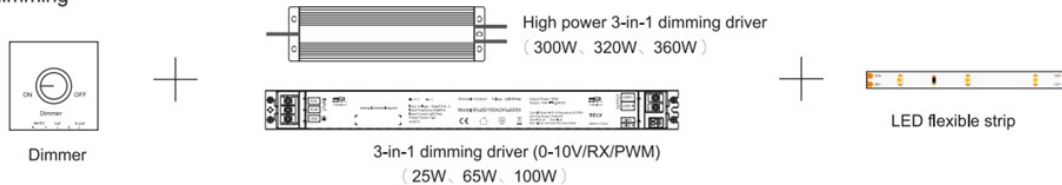


Note: The Curves indicate the illuminated area and the average illumination when the luminaire is at different distance.

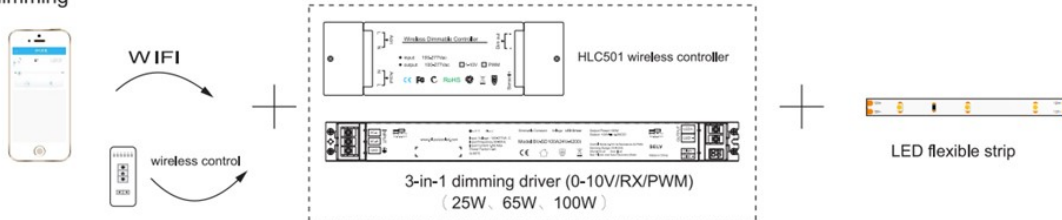
Triac dimming



0-10V dimming



Smart dimming





SOUTHERN STATE
LIGHTING

COB-300

Applications





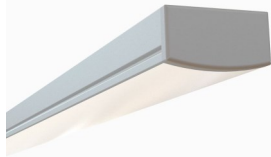
COB-300

Compatible Extrusions

ESR-SOSL



ESR-REC



ESR-OTR



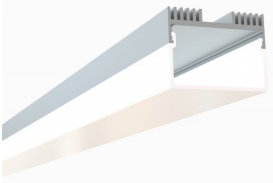
FSR-TRI



ESR-SOI



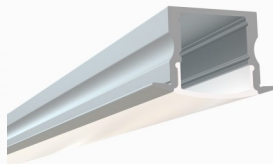
ESR-RC1



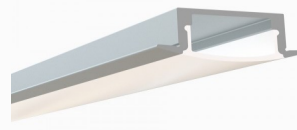
FSR-RND



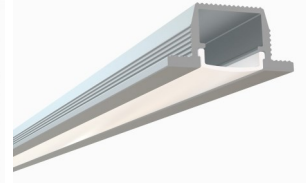
ERC-SOSL



ERC-REC



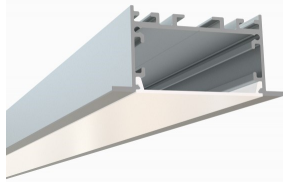
ERC-WLK



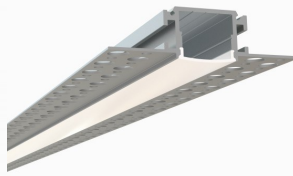
ERC-RE1



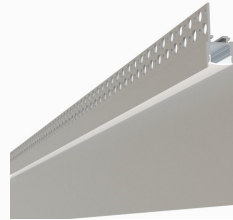
ERC-RE2



ETL-SQ



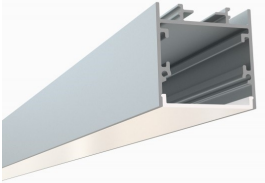
ETL-KCK



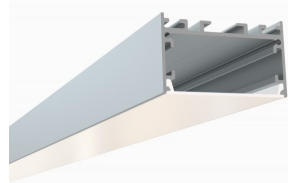
ESU-SQSL



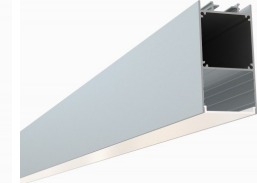
ESU-SOI



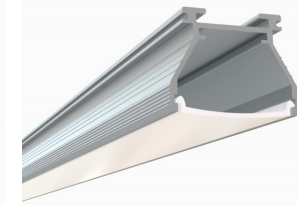
ESU-RCW



ESU-RCN



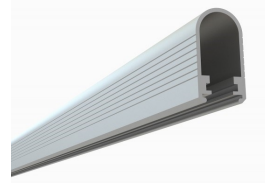
ESU-VTL



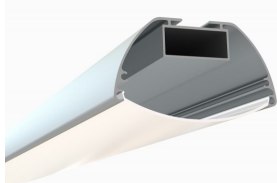
ERO-SLI



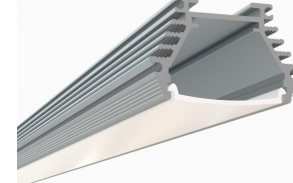
FRD-CIS



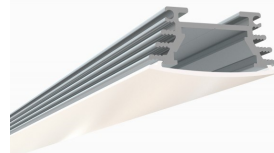
FAD-OVI



FAD-VT2



FAD-VT3



FAD-RND

