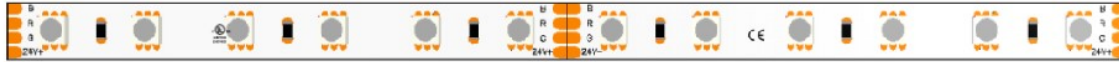




CCO-RGBW



R 620nm
4.8W/m (1.46W/ft)
115lm/m (35lm/ft)

G 525nm
4.8W/m (1.46W/ft)
300lm/m (91lm/ft)

B 470nm
4.8W/m (1.46W/ft)
90lm/m (27lm/ft)

White
4.8W/m (1.46W/ft)
380lm/m (116lm/ft)



The CCO-RGBW Series from Southern State Lighting is an Ultra-high efficiency RGBW lighting solution designed for architectural, commercial, and high-end residential applications. This is a 12mm wide body, which is compatible with most of our extrusion options. High color rendering and deep saturated colors make this a go-to solution when color is needed.

Catalog Nomenclature:

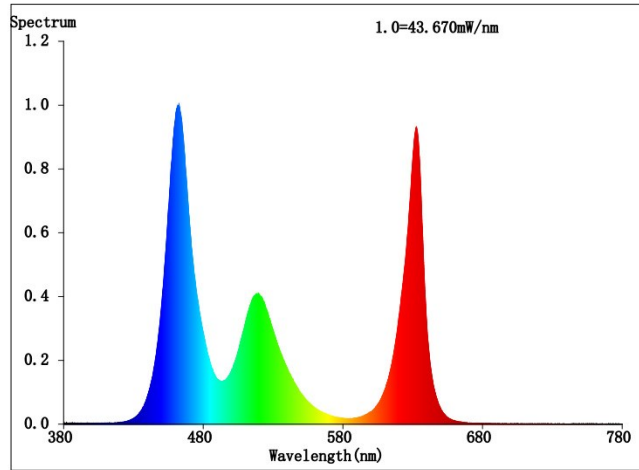
Series	Output	Color Temp	IP Rating
CCO	120	RGBW	IP67

Body Width:	12mm	Input Voltage:	24VDC
Wattage/Ft:	5.2W	Beam Angle:	120 Degrees
Lumens/Ft:	120lm/ft	Max Run Length:	16.4ft
CCT's:	RGBW	Bin Sorting:	Single Bin
CRI:	90+	Bin Consistency:	3-Step MacAdam Ellipse
Cut Interval:	3.94" (100mm)	Driver Type:	Constant Voltage
IP Rating:	IP67	Dimming Capability:	0% With Compatible Driver
Rated Life:	L70>50,000 Hours	Certifications:	UL, CE, ROHS

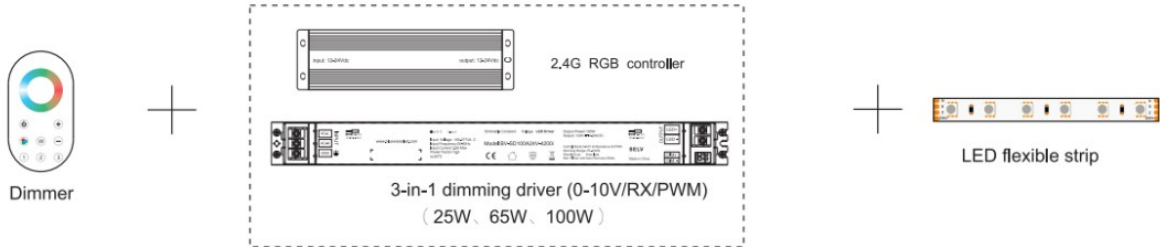


CCO-RGBW

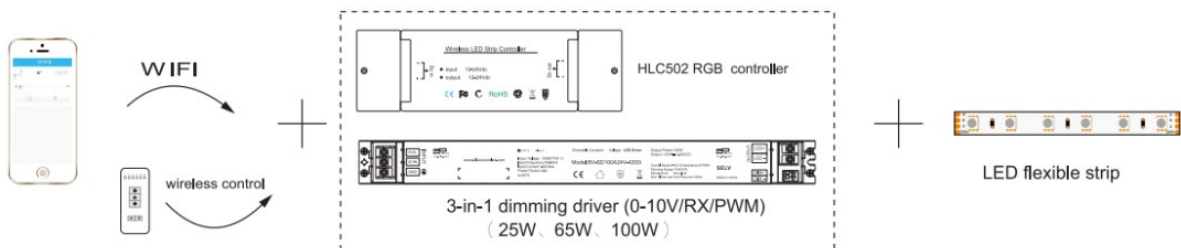
Test report



2.4G dimming

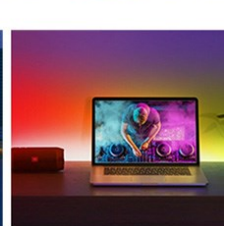
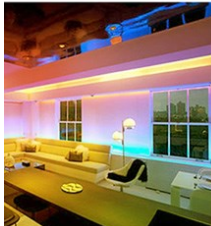


Smart dimming





Applications





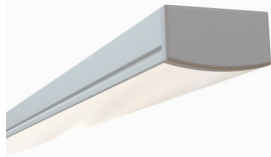
CCO-RGBW

Compatible Extrusions

ESR-SOSL



ESR-REC



ESR-OTR



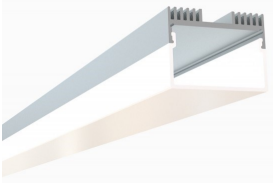
FSR-TRI



ESR-SOI



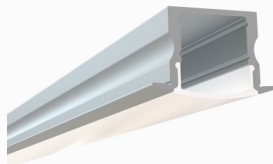
ESR-RC1



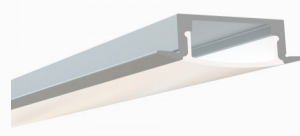
FSR-RND



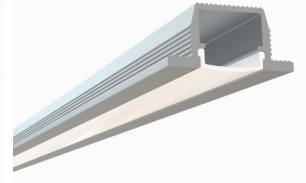
ERC-SOSL



ERC-REC



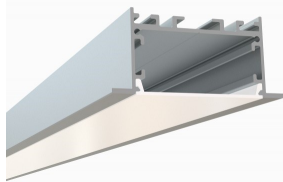
ERC-WLK



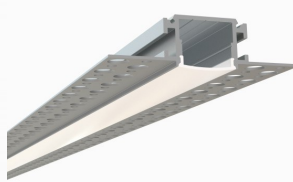
ERC-RE1



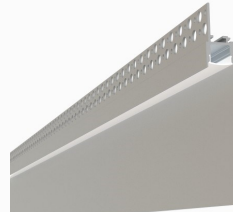
ERC-RE2



ETL-SQ



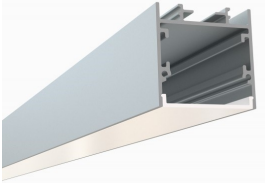
ETL-KCK



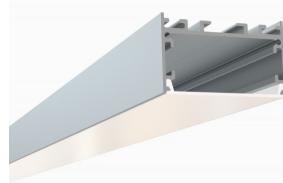
ESU-SQSL



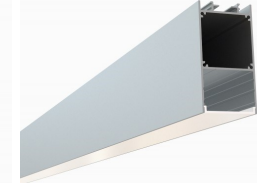
ESU-SOI



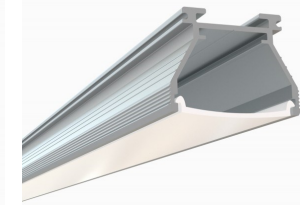
ESU-RCW



ESU-RCN



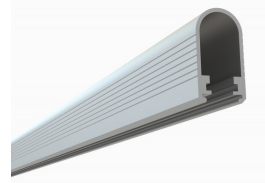
ESU-VTL



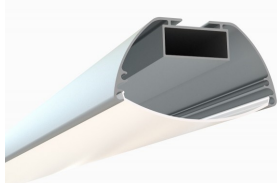
ERO-SLI



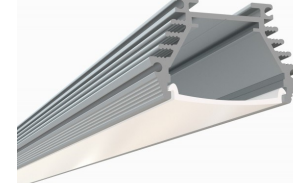
FRD-CIS



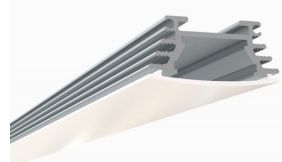
FAD-OVI



FAD-VT2



FAD-VT3



FAD-RND

