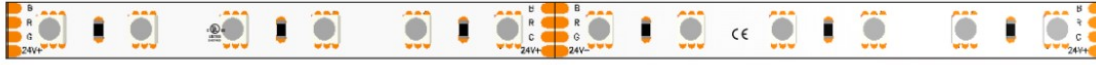




CCO-RGB



R 620nm	G 525nm	B 470nm	RGB
5.8W/m (1.77W/ft)	5.8W/m (1.77W/ft)	5.8W/m (1.77W/ft)	5.8W/m (1.77W/ft)
185lm/m (56lm/ft)	380lm/m (116lm/ft)	75lm/m (23lm/ft)	620lm/m (189lm/ft)

The CCO-RGB Series from Southern State Lighting is an Ultra-high efficiency RGB lighting solution designed for architectural, commercial, and high-end residential applications. This is a 12mm wide body, which is compatible with most of our extrusion options. High color rendering and deep saturated colors make this a go-to solution when color is needed.

Catalog Nomenclature:

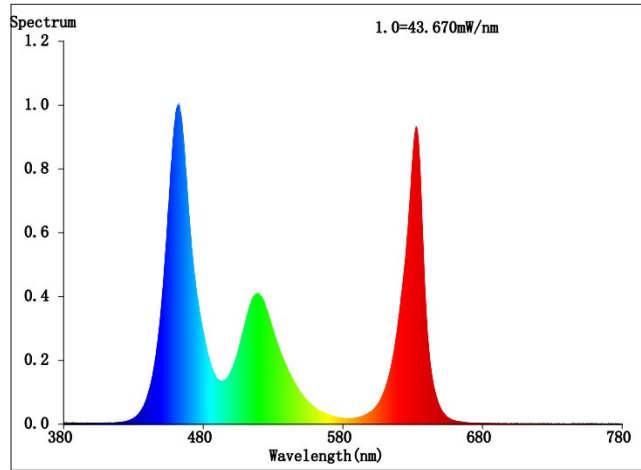
Series	Output	Color Temp	IP Rating
CCO	160	RGB	IP67

Body Width:	12mm	Input Voltage:	24VDC
Wattage/Ft:	5.2W	Beam Angle:	120 Degrees
Lumens/Ft:	160lm/ft	Max Run Length:	16.4ft
CCT's:	RGB	Bin Sorting:	Single Bin
CRI:	90+	Bin Consistency:	3-Step MacAdam Ellipse
Cut Interval:	3.24" (83.3mm)	Driver Type:	Constant Voltage
IP Rating:	IP67	Dimming Capability:	0% With Compatible Driver
Rated Life:	L70>50,000 Hours	Certifications:	UL, CE, ROHS

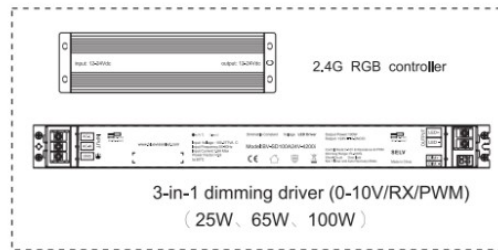


CCO-RGB

Test report

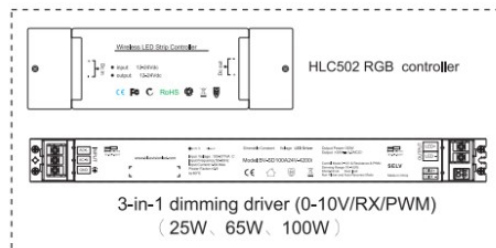


2.4G dimming



LED flexible strip

Smart dimming



LED flexible strip



Applications





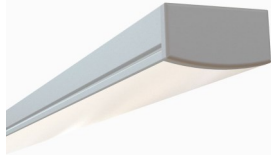
CCO-RGB

Compatible Extrusions

ESR-SOSL



ESR-REC



ESR-OTR



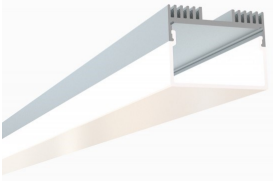
FSR-TRI



ESR-SOI



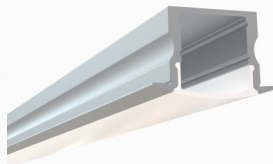
ESR-RC1



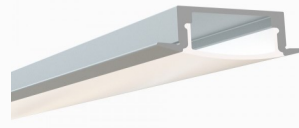
FSR-RND



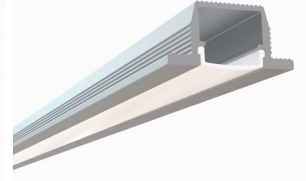
ERC-SOSL



ERC-REC



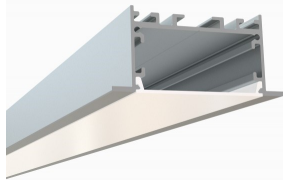
ERC-WLK



ERC-RE1



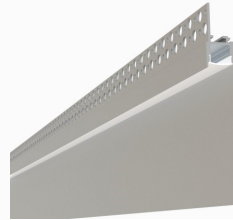
ERC-RE2



ETL-SQ



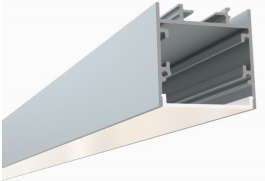
ETL-KCK



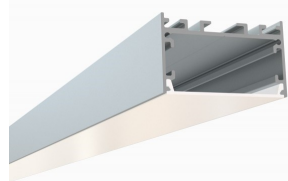
ESU-SQSL



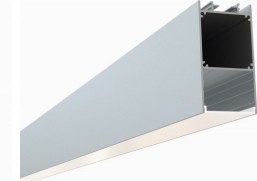
ESU-SOI



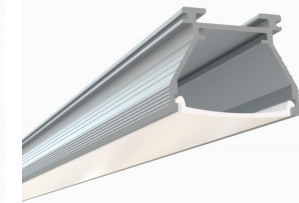
ESU-RCW



ESU-RCN



ESU-VTL



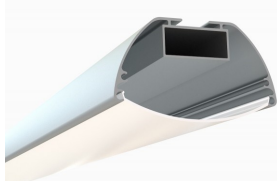
ERO-SLI



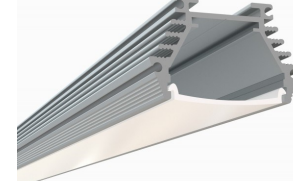
FRD-CIS



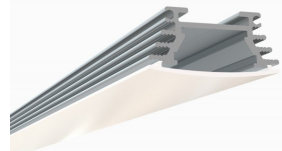
FAD-OVI



FAD-VT2



FAD-VT3



FAD-RND

