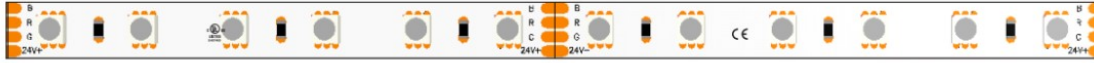




CC-RGB



R 620nm 5.8W/m (1.77W/ft) 185lm/m (56lm/ft)	G 525nm 5.8W/m (1.77W/ft) 380lm/m (116lm/ft)	B 470nm 5.8W/m (1.77W/ft) 75lm/m (23lm/ft)	RGB 5.8W/m (1.77W/ft) 620lm/m (189lm/ft)
--	---	---	---



The CC-RGB Series from Southern State Lighting is an Ultra-high efficiency RGB lighting solution designed for architectural, commercial, and high-end residential applications. This is a 12mm wide body, which is compatible with most of our extrusion options. High color rendering and deep saturated colors make this a go-to solution when color is needed.

Catalog Nomenclature:

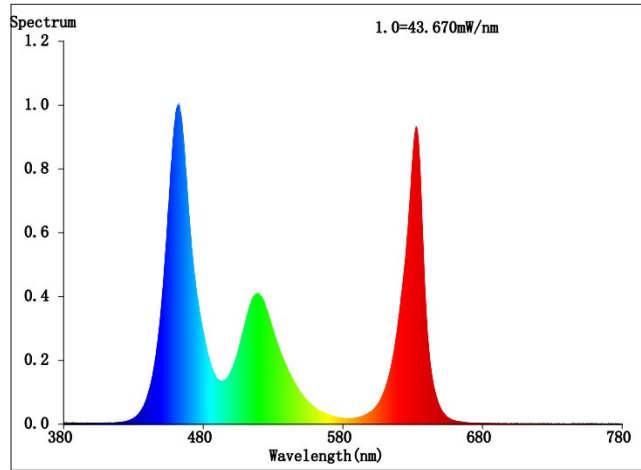
Series	Output	Color Temp	IP Rating
CC	160	RGB	IP20

Body Width: 12mm	Input Voltage: 24VDC
Wattage/Ft: 5.2W	Beam Angle: 120 Degrees
Lumens/Ft: 160lm/ft	Max Run Length: 16.4ft
CCT's: RGB	Bin Sorting: Single Bin
CRI: 90+	Bin Consistency: 3-Step MacAdam Ellipse
Cut Interval: 3.24" (83.3mm)	Driver Type: Constant Voltage
IP Rating: IP20	Dimming Capability: 0% With Compatible Driver
Rated Life: L70>50,000 Hours	Certifications: UL, CE, ROHS

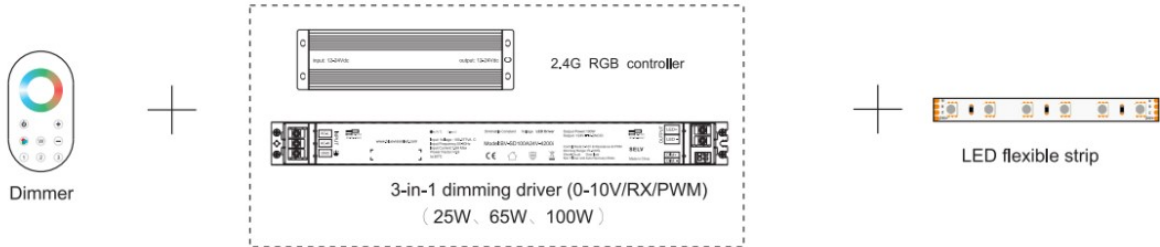


CC-RGB

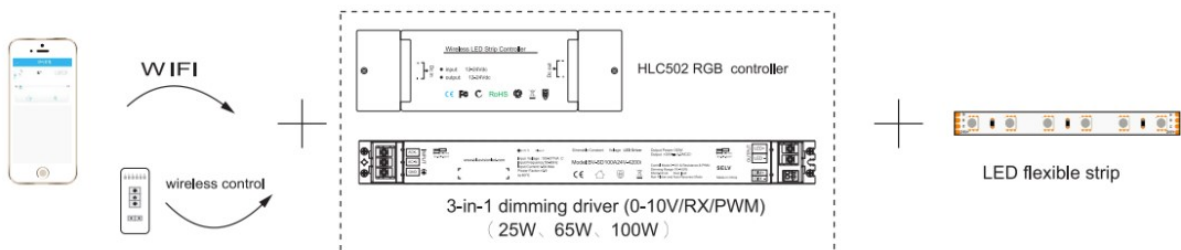
Test report



2.4G dimming



Smart dimming





Applications





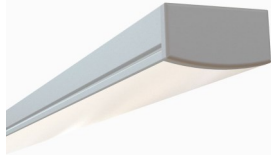
CC-RGB

Compatible Extrusions

ESR-SOSL



ESR-REC



ESR-OTR



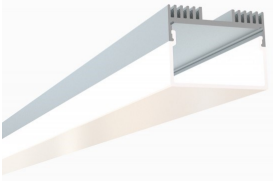
FSR-TRI



ESR-SOI



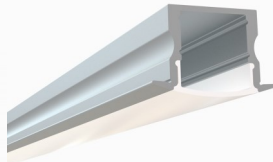
ESR-RC1



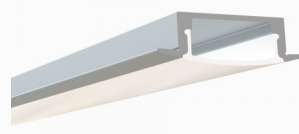
FSR-RND



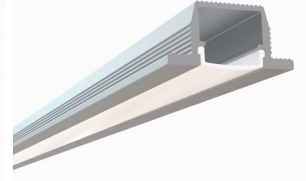
ERC-SOSL



ERC-REC



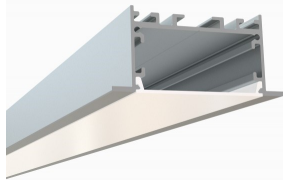
ERC-WLK



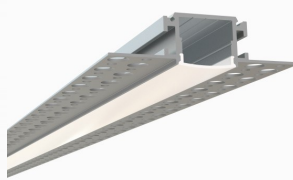
ERC-RE1



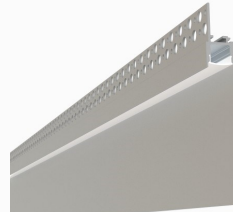
ERC-RE2



ETL-SQ



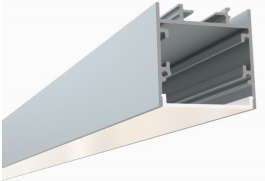
ETL-KCK



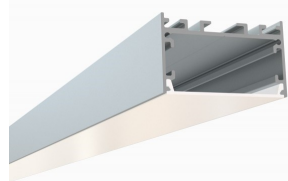
ESU-SQSL



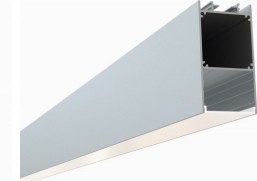
ESU-SOI



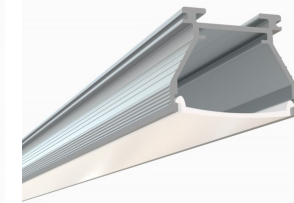
ESU-RCW



ESU-RCN



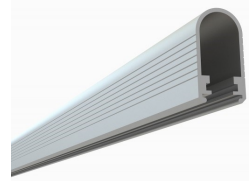
ESU-VTL



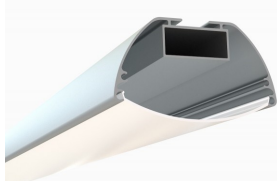
ERO-SLI



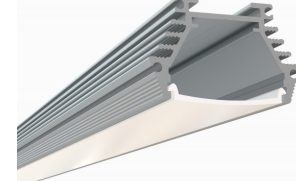
FRD-CIS



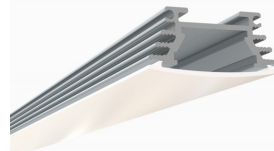
FAD-OVI



FAD-VT2



FAD-VT3



FAD-RND

