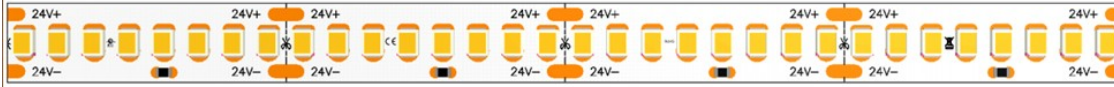




SWO-900



2700K 20.2W/m (6.2W/ft) 2740lm/m (835lm/ft)	3000K 20.2W/m (6.2W/ft) 2937lm/m (895lm/ft)	4000K 20.2W/m (6.2W/ft) 3114lm/m (949lm/ft)	6000K 20.2W/m (6.2W/ft) 3036lm/m (925lm/ft)
2300K 20.2W/m (6.2W/ft) 2700lm/m (823lm/ft)	3500K 20.2W/m (6.2W/ft) 2980lm/m (908lm/ft)	5000K 20.2W/m (6.2W/ft) 3000lm/m (914lm/ft)	

The SWO-900 Series from Southern State Lighting is an Ultra-high efficiency flexible lighting solution designed for architectural, commercial, and high-end residential applications. This is a 10mm wide body, which is compatible with all of our extrusion options. High color rendering in both fidelity and gamut make this an excellent solution for applications with rich finishes and fine details that need to be brought front and center.

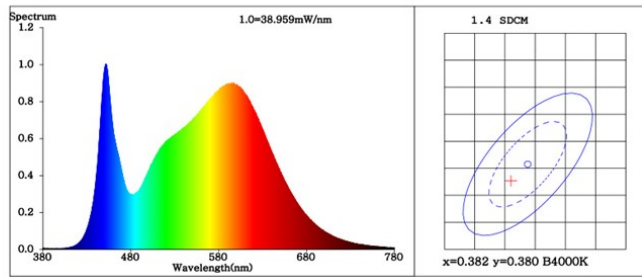
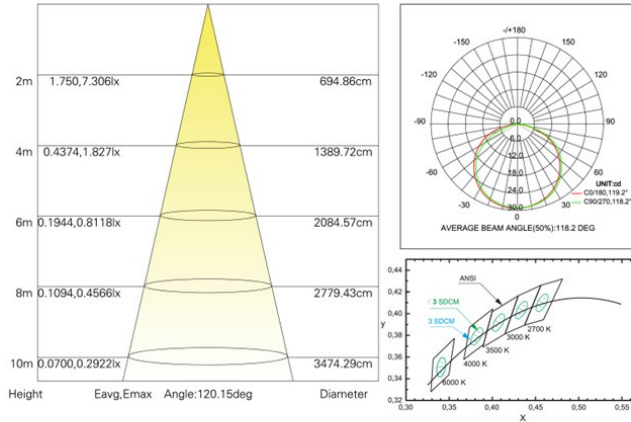
Catalog Nomenclature:

Series	Output	Color Temp	IP Rating
SWO	900	(CCT)	IP67

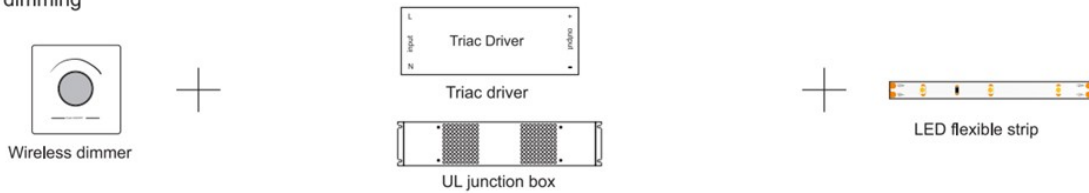
Body Width:	10mm	Input Voltage:	24VDC
Wattage/Ft:	6.16W	Beam Angle:	120 Degrees
Lumens/Ft:	835-949lm/ft	Max Run Length:	16.4ft (5m)
CCT's:	2300K,2700K*, 3000K*, 3500K*, 4000K,5000K, 6000K	Bin Sorting:	Single Bin
CRI:	90+	Bin Consistency:	3-Step MacAdam Ellipse
Cut Interval:	1.41" (35.7mm)	Driver Type:	Constant Voltage
IP Rating:	IP67	Dimming Capability:	0% With Compatible Driver
Rated Life:	L70>50,000 Hours	Certifications:	UL, CE, ROHS



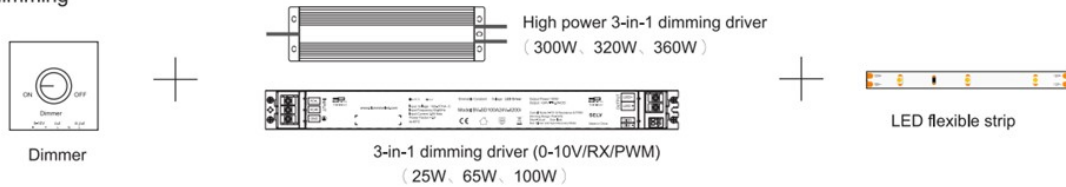
Test report



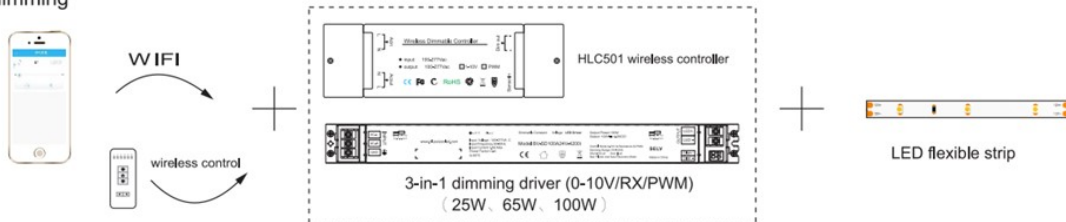
Triac dimming



0-10V dimming



Smart dimming





SOUTHERN STATE
LIGHTING

SWO-900

Applications





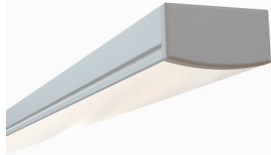
SWO-900

Compatible Extrusions

ESR-SOSL



ESR-REC



ESR-OTR



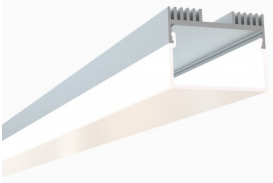
FSR-TRI



ESR-SOI



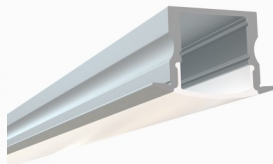
ESR-RC1



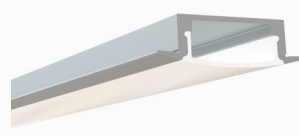
FSR-RND



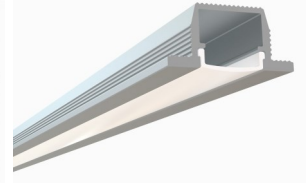
ERC-SOSL



ERC-REC



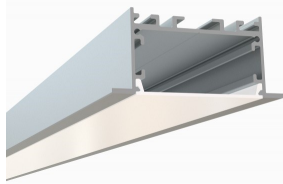
ERC-WLK



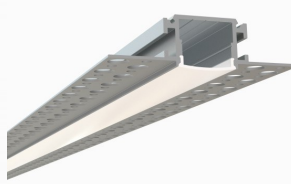
ERC-RE1



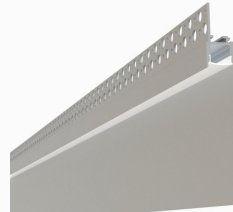
ERC-RE2



ETL-SQ



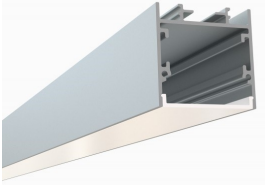
ETL-KCK



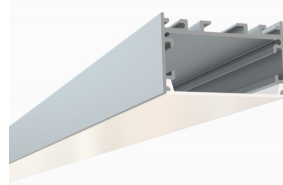
ESU-SQSL



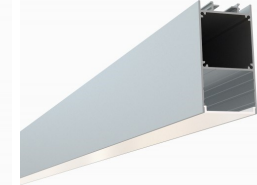
ESU-SOI



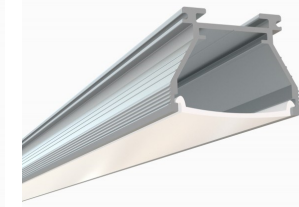
ESU-RCW



ESU-RCN



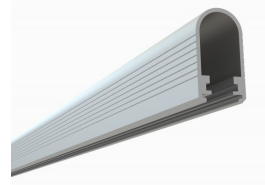
ESU-VTL



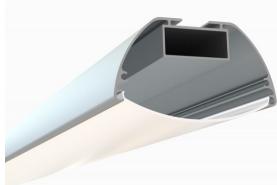
ERO-SLI



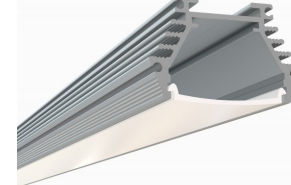
FRD-CIS



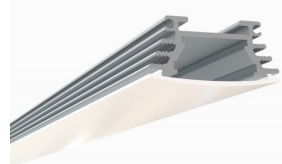
FAD-OVI



FAD-VT2



FAD-VT3



FAD-RND

