



ESR-RC1 Series

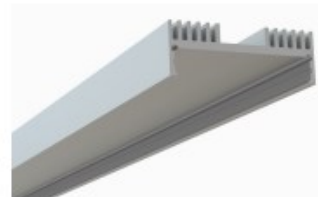
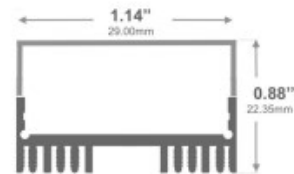
The ESR-RC1 Series is a square-shaped LED Aluminum Channel compatible with LED Strips up-to 1.00" (25.4mm) wide.

It offers Hot-Spot Free (Dotless) applications with appropriate LED Strips.

Thanks to its heatsink design, it offers best-in-class performance for high-output lighting applications.

It allows you to build Dot-Less (HotspotFree) LED Fixtures using appropriate LED Strips. SW-600, SW-900, SWO-600, SWO-900, TW Series, COB Series.

Aluminum Channel provides better cooling to extend the lifespan of your LED Strip.



Type: LED Channel

Material: Aluminum 6063-T5

Surface: Clear Anodized

Height w/Lens: 22.35mm / 0.88"

Width: 29mm / 1.14"

Length: Nominal 8FT (94") / 2.40M





SOUTHERN STATE
LIGHTING

ESR-RC1 Series

Accessories

Frosted Diffuser



FLN-ESR-RC1

End Caps



EC-ESR-RC1

Mounting Clips



MC-ESR-RC1